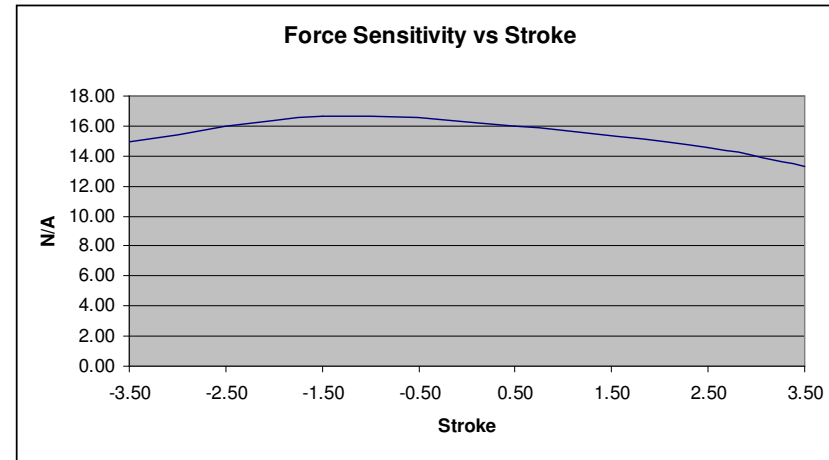
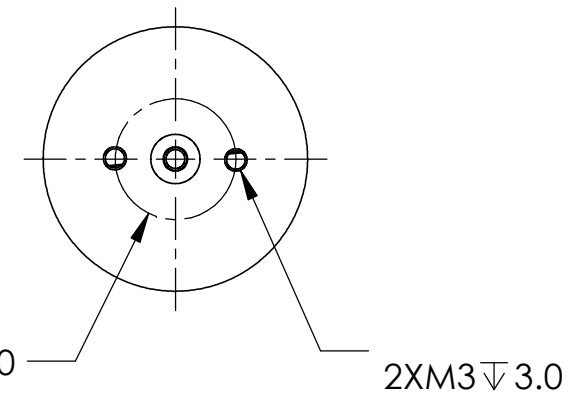
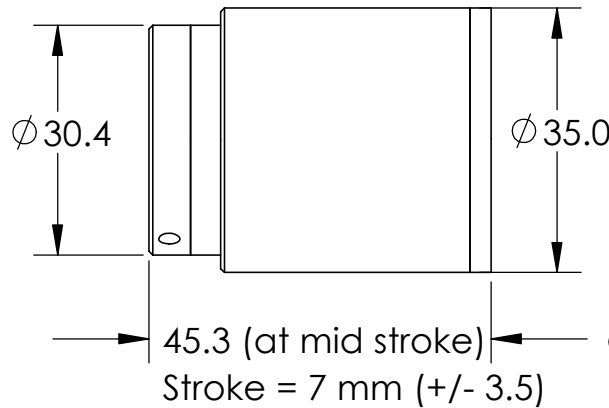
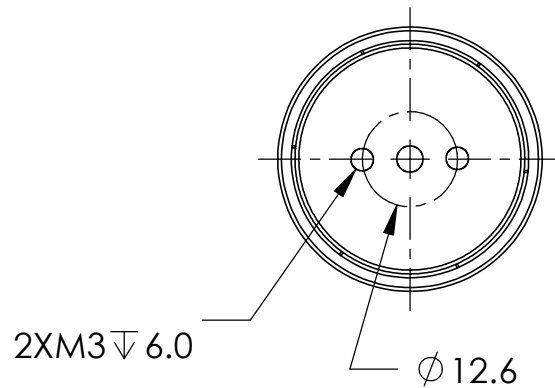


| Model                                | Units     | AVM 35H-7 |
|--------------------------------------|-----------|-----------|
| Stroke                               | mm        | 7         |
| Force sensitivity (at mid stroke)    | N/A       | 16.00     |
| Back EMF constant                    | V/m/s     | 16.00     |
| Continuous force (at 100 °C)*        | N         | 14.40     |
| Continuous force (at 155 °C)*        | N         | 18.40     |
| Peak force                           | N         | 72.0      |
| Resistance                           | ohms      | 9.3       |
| Inductance                           | mH        | 3.95      |
| Recommended min bus voltage          | V         | 60.0      |
| Voltage at peak force                | V         | 41.9      |
| Continuous current (coil at 100 °C)* | A         | 0.90      |
| Continuous current (coil at 155 °C)* | A         | 1.15      |
| Peak current                         | A         | 4.5       |
| Actuator constant                    | N/SqRt(W) | 5.25      |
| Electrical time constant             | ms        | 0.4       |
| Mechanical time constant             | ms        | 1.8       |
| Clearance of coil                    | mm        | 0.50      |
| Power at peak force                  | W         | 188.3     |
| Max coil temperature                 | °C        | 155.0     |
| Coil assembly mass                   | g         | 50.2      |
| Core assembly mass                   | g         | 153.0     |



\* Continuous force measured without any additional mounting plate or heat sink on coil.



|           |   |                                |            |
|-----------|---|--------------------------------|------------|
| REVISION  | 3 rd angle projection<br>Dimensions in mm<br>.X +/- 0.05<br>X +/- 0.5 | TITLE:                         | AVM35-HF-7 |
| MATERIAL: |   | Drawing:                       |            |
| DATE      | 7 Feb 2007  | <b>Akribis Systems Pte Ltd</b> |            |
| SCALE:    | 1:2   |                                |            |
|           |   | SHEET 1 OF 1                   |            |